



**BROCHURE**  
**POLYJET**

# J5 MediJet

The all-in-one medical printer.





# The economical, compact, all-in-one medical modeling printer.

J5 MediJet™ sets a new standard for medical modeling. With multiple materials and multicolor capabilities, academic medical centers, hospitals and medical device companies can create brilliantly vivid anatomical models and drilling and cutting guides\* that are sterilizable and biocompatible – all in one platform.

## Applications

- Patient-specific anatomical models for pre-surgical planning
- Precisely accurate anatomy for training and education
- Surgical guides and tooling\*
- Medical device product development

\* With approved 3rd party 510k cleared segmentation software





# The new standard for planning, education, and testing.

## Multi-material and multicolor capabilities

Create patient specific, brilliantly vivid anatomical models with multiple materials and multicolor capabilities that are biocompatible and can be sterilized.

## Functional surgical guides and tooling

Create drilling and cutting guides\* that are sterilizable and biocompatible.

## More printing with less handling

Accommodate multiple medical models in a single print with significantly less handling.

## Small footprint, big impact

Print exact pathologies on-demand and train physicians, students and medical device field staff from anywhere. MediJet™ is economical and compact enough for small lab spaces.



## Hospitals and Academic Medical Centers

### Improve point-of-care planning, patient satisfaction, and training and education.

Using patient-specific 3D printed medical models for on-demand training and pre-surgical planning can improve patient outcomes by reducing complications and decreasing OR time and length of hospital stay.

Data demonstrates that patient satisfaction improves when 3D medical models are used as part of education for informed consent.<sup>1, 2, 3</sup>

## Medical Device Companies

### Enhance training and education programs and improve product quality.

Create consistency in new medical device development and testing to enhance product quality, reduce costs and accelerate time to market.

Scale up product demonstrations when training field staff and physicians on a new medical device by providing models that replicate the disease state your device is intended to treat—no storage requirements or ethical concerns associated with animal and cadaver models.

# All on a certified system.

- 510k cleared for clinical diagnostic use with leading segmentation software companies.
- Biocompatibility certification
  - ISO 10993-1:2018 for limited contact to tissue and wbone and permanent contact to intact skin
  - ISO 18562-1:2017 for breathing gas pathways in healthcare applications
- Sterilization methods
  - Steam, Gamma and EtO for MED610 and MED615RGD
  - Steam and Gamma for Biocompatible Digital ABS Plus™ (MED531 and MED 5151+)
  - Steam, Gamma, and EtO for Rigid Transparent family
- ISO 13485 Certified (material and hardware manufacturing sites)





## 3D printing workflow, simplified.

MediJet's large tray accommodates multiple medical models in a single print and requires significantly less handling.

### GrabCAD Print software makes it easy:

- Automatically corrects files and reduces print time with automatic tray arrangement.
- Calculate the time and material resources needed for production before printing.
- 3MF file supported – significantly simplifies color assignment in your workflow.
- New feature alerts the user if there has been cross contamination with a biocompatible material.
- Schedule and monitor the print job remotely from your mobile device or browser.
- Get automatic alerts remotely when the job is printing and finished.

# 30%

Faster print  
time than  
comparable  
printing  
solutions\*\*

\*\* Compared to six types of anatomical models printed with Formlabs Form3, Projet 3600, Projet 6000, and Mimaki 3DUJ-553



## Lower total cost of ownership.

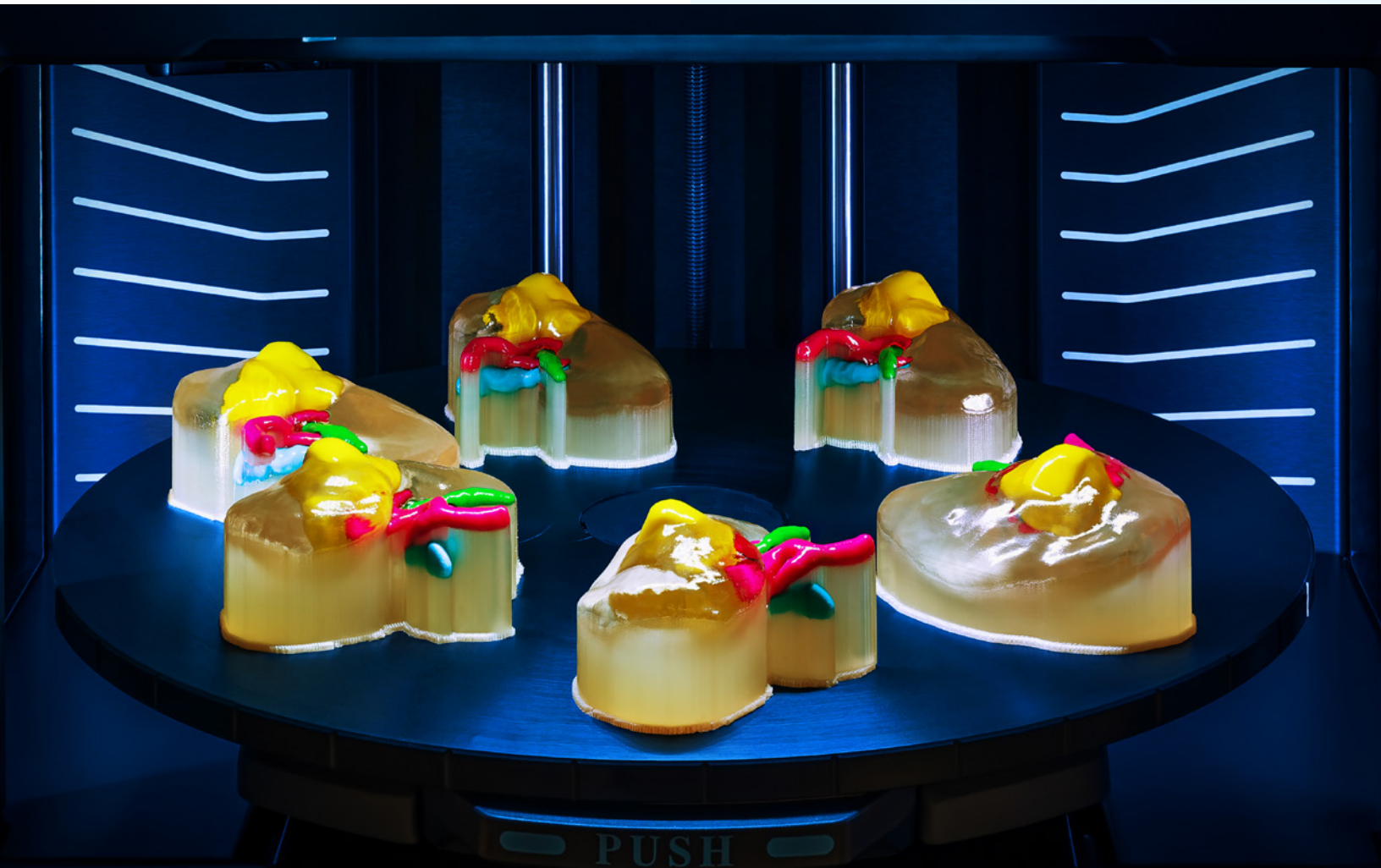
With less upfront investment and a lower total cost of ownership, MediJet is designed to maximize your investment in 3D printing. All application needs can be met with one platform—no need for multiple printers.

# 30%

lower cost per part  
compared to outsourcing

## Economical DraftWhite Material

Significantly lower the cost  
of single material  
applications and bulk color  
models



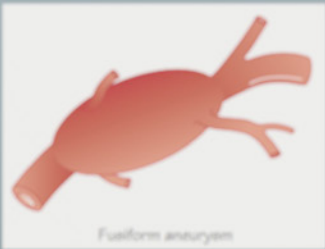


# See the specs

| Product Specifications                   |  |
|--|--|
| <b>Model Materials</b>                   | <p><b>Biocompatible materials:</b></p> <ul style="list-style-type: none"><li><input type="checkbox"/> Biocompatible rigid transparent (MED610 or MED610-DSG)</li><li><input checked="" type="checkbox"/> Biocompatible Opaque (MED615RGD™ IV)</li><li><input type="checkbox"/> Biocompatible Digital ABS Plus™ (MED531S and MED515S)</li></ul> <p><b>Rubber like:</b></p> <ul style="list-style-type: none"><li><input type="checkbox"/> Elastico Clear (FLX934)</li></ul> <p><b>Rigid Transparent Colors:</b></p> <ul style="list-style-type: none"><li><input checked="" type="checkbox"/> VeroCyan™V</li><li><input checked="" type="checkbox"/> VeroMagenta™V</li><li><input checked="" type="checkbox"/> VeroYellow™V</li><li><input type="checkbox"/> VeroUltra™ClearS</li><li><input checked="" type="checkbox"/> VeroBlackPlus™</li><li><input type="checkbox"/> DraftWhite</li><li><input type="checkbox"/> ToughONE WhiteS</li></ul> |
| <b>Supported Sterilization Processes</b> | Steam (4 minutes at 132 °C),<br>Gamma (25 – 50 kGy),<br>EtO (specifications available upon request)  |
| <b>Digital Model Materials</b>           | Unlimited number of composite materials including over 500,000 colors  |
| <b>Support Materials</b>                 | SUP710™ (Water Jet removable),<br>WSS™150 (Water soluble)  |
| <b>Build Tray</b>                        | Printing area: 1,174 cm <sup>2</sup><br>Max Part Size: Up to 140 x 200 x 190 mm (5.51 x 7.87 x 7.48 in.)   |
| <b>Layer Thickness</b>                   | Horizontal build layers down to 18 microns (0.0007 in.)  |
| <b>Accuracy</b>                          | Deviation from STL dimensions with rigid materials, based on size:<br>under 100 mm – ±150µ; above 100 mm – ±0.15% of part length.*<br><small>* True for 67% (1 sigma) models printed for future information can be found in the spec sheet</small>   |
| <b>Network Connectivity</b>              | LAN – TCP/IP   |
| <b>System Size and Weight</b>            | 651 x 661 x 1511mm (25.63 x 26.02 x 59.49 in.); 228 kg (503 lbs.)  |
| <b>Operating Conditions</b>              | Temperature 18 – 25 °C (64 – 77 °F); relative humidity 30 – 70% (non-condensing)   |
| <b>Power Requirements</b>                | 100 – 240 VAC, 50 – 60 HZ, 10A, 1 phase  |
| <b>Regulatory Compliance</b>             | CE, FCC, EAC   |
| <b>Software</b>                          | GrabCAD Print  |
| <b>Build Modes</b>                       | High Quality Speed (HQS) – 18.75µm   |

1

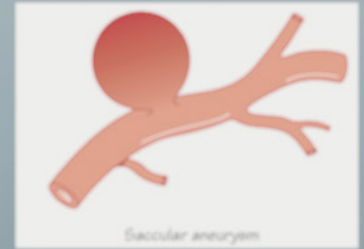
**Fusiform:** Wide in the middle and tapers at both ends, classically an abdominal aortic aneurysm.



Fusiform aneurysm

2

**Saccular:** May be almost spherical and projects from one point on the arterial wall, classically an intracerebral aneurysm, but still contains all three wall layers.



Saccular aneurysm



#### References:

- 1 Yang, T., Tan, T., Yang, J., Pan, J., Hu, C., Li, J., & Zou, Y. (2018). The impact of using three-dimensional printed liver models for patient education. *The Journal of International Medical Research*, 46(4), 1570-1578, <https://doi.org/10.1177/0300060518755267>.
- 2 Diment, L.E., Thompson, M. S., & Bergmann, J. (2017). Clinical efficacy and effectiveness of 3D printing: a systematic review. *BMJ open*, 7(12), e016891. <https://doi.org/10.1136/bmjopen-2017-016891>.
- 3 Kim, P. S., Choi, C. H., Han, I. H, Lee, J. H., Choi, H. J., & Lee, J. I. (2019). Obtaining informed consent using patient-specific 3D printing cerebral aneurysm model. *Journal of Korean Neurosurgical Society*, 62(4), 398-404, <https://doi.org/10.3340/jkns.2019.0092>.



**stratasys**

[stratasys.com](https://www.stratasys.com)

ISO 9001:2015  
ISO 13485:2016

Stratasys Headquarters

5995 Opus Parkway,  
Minnetonka, MN 55343  
+1 800 801 6491 (US Toll Free)  
+1 952 937-3000 (Intl)  
+1 952 937-0070 (Fax)

1 Holtzman St.  
Science Park  
Rehovot, 7670401  
Israel  
+972 74 745 4000  
+972 74 745 5000 (Fax)

**BROCHURE  
POLYJET**

© 2026 Stratasys. All rights reserved. Stratasys, the Stratasys Signet logo, PolyJet, GrabCAD, J5 MediJet, GrabCAD Print, MED615RGD, VeroCyanV, VeroMagentaV, VeroYellowV, VeroUltra ClearS, VeroBlackPlus, Biocompatible Digital ABS Plus and WSS150 are trademarks or registered trademarks of Stratasys Ltd. and/or its subsidiaries and affiliates. All other trademarks are the property of their respective owners. Product specifications subject to change without notice. BR\_PJ\_J5 MediJet\_0226a